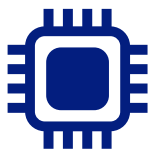
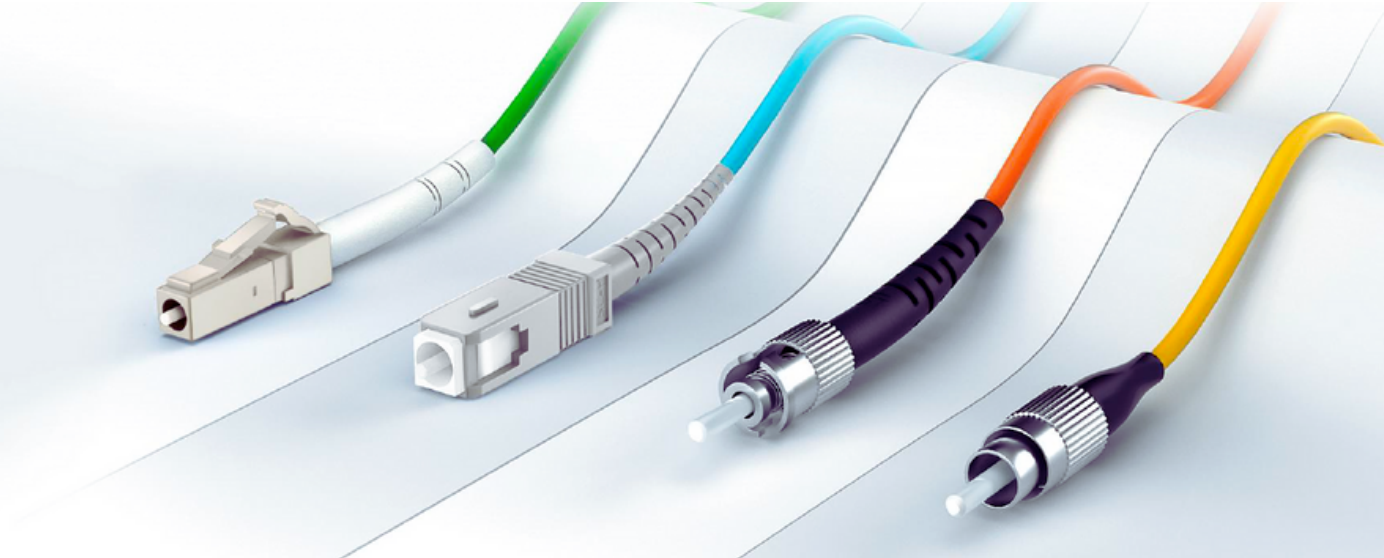


DUPLEX ARMORED FIBER PATCH CABLES



VERSATILITY

- Multiple fiber types: OM1, OM2, OM3, OM4, OM5, and OS2.
- Supports Gigabit Ethernet, 10 Gigabit Ethernet, and high-speed Fiber Channel.



CONNECTOR OPTIONS

- Wide range of connectors: LC/SC/ST/FC/LSH/MTRJ/MU.
- Short boot options for LC and SC connectors.



HIGH-QUALITY COMPONENTS

- Repeatability&interchangeability.
- Meets Telcordia GR-326-core, JIS C-5973, TIA/EIA 604 standards.



CUSTOMIZATION

- Customer-specific lengths.
- Various connector types available.

FIBER PARAMETER



No.	Items	unit	Specification	
			10G-150	
1	Core Diameter	μm	50.0±2.5	
2	Cladding Diameter	μm	124.8±1.0	
3	Core Non-Circularity	%	≤5.0	
4	Cladding Non-Circularity	%	≤1.0	
5	Core-Cladding Concentricity Error	μm	≤1.0	
6	Coating Diameter	μm	245±7	
7	Coating Non-Circularity	%	≤6.0	
8	Cladding-Coating Concentricity Error	μm	≤12.0	
9	OFL Bandwidth	850nm	MHz·km	≥1500
		1300nm	MHz·km	≥500
10	Effective Modal Bandwidth	850nm	MHz·km	≥2000
		1300nm	MHz·km	≥500
11	Attenuation Coefficient	850nm	dB/km	≤2.3
		1300nm	dB/km	≤0.6

SPECIFICATION

Type	SM		MM	
	UPC	APC	UPC	PC
Characteristics	UPC	APC	UPC	PC
Insertion loss(dB)	≤0.3dB	≤0.3dB	≤0.3dB	0.3dB
Return loss (dB)	≥50dB	≥60dB	≥35dB	≥35dB
Attenuation(Maximum)	0.4dB@1310nm 0.3dB@1550nm	0.4dB@1310nm 0.3dB@1550nm	3.0dB@850nm 1.2dB@1300nm	3.0dB@850nm 1.2dB@1300nm
Attenuation(dB)	SM:1310 nm≤0.35dB/km;1550 nm≤0.25dB/km MM:850 nm≤3.0dB/km; 1300 nm≤1.0dB/km			
Durability(dB)	≥500/Matings			
Operating Temperature(dB)	-40℃~ +85℃			

Elfcam has made all efforts to ensure the accuracy of the information, but all information in this document does not constitute any kind of warranty.



No. 1 supplier of fiber optic materials



A4, 32 Avenue de l'épi d'or,
94800, Villejuif, France



Phone: +33 07 49 95 50 99



Email: contact@elfcams.com



www.elfcams.com